

# HX12KG1561G High-Power SPDT Switch

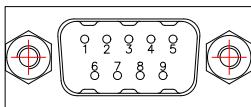
## 1. Description

ID	Items	Specifications
1-1	Type	Reflective High-Power SPDT Switch
1-2	Frequency Range	1 ~ 30MHz
1-3	Isolation	≥50dB
1-4	Insertion Loss	≤0.4dB
1-5	VSWR	≤1.5
1-6	Impedance	50Ω
1-7	RF Input Power	500W Pulsed, DC=15%, PW= 600us
1-8	Switching Speed	≤15μs
1-9	Input/Output Connectors	N-F
1-10	Control Connectors	DB9-Male
1-11	Control	TTL=0 ~ 0.8V/3.3 ~ 5V
1-12	DC Power Supply	+12V/≤300mA

## 2. Environmental Specifications

ID	Items	Specifications
2-1	Operational Temperature	-40°C ~ +70°C
2-2	Storage Temperature	-55°C ~ +85°C

## 3. Interface

ID	Items	Specifications
3-1	Control Connectors	DB9-Male
		
3-2	<b>NO</b>	<b>Specifications</b>
	1-2	+12V
	3	TTL
	4-9	GND

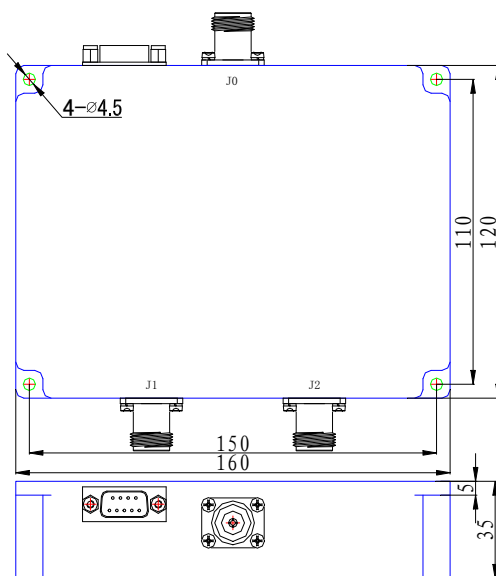
## 4. Truth Table

ID	TTL	Signal Path State
4-1	0	J0→J1
	1	J0→J2

## 5. Outline Drawing

ID	Items	Specifications
5-1	Outline Drawing	Unit: mm

Tolerances:±0.1mm



5-2	Material	Aluminum
5-3	Finished	Natural Color
5-4	Weight	/

NOTE: ALL SPECIFICATIONS ARE SUBJECT TO CHANGE WITHOUT NOTICE AT ANY TIME.